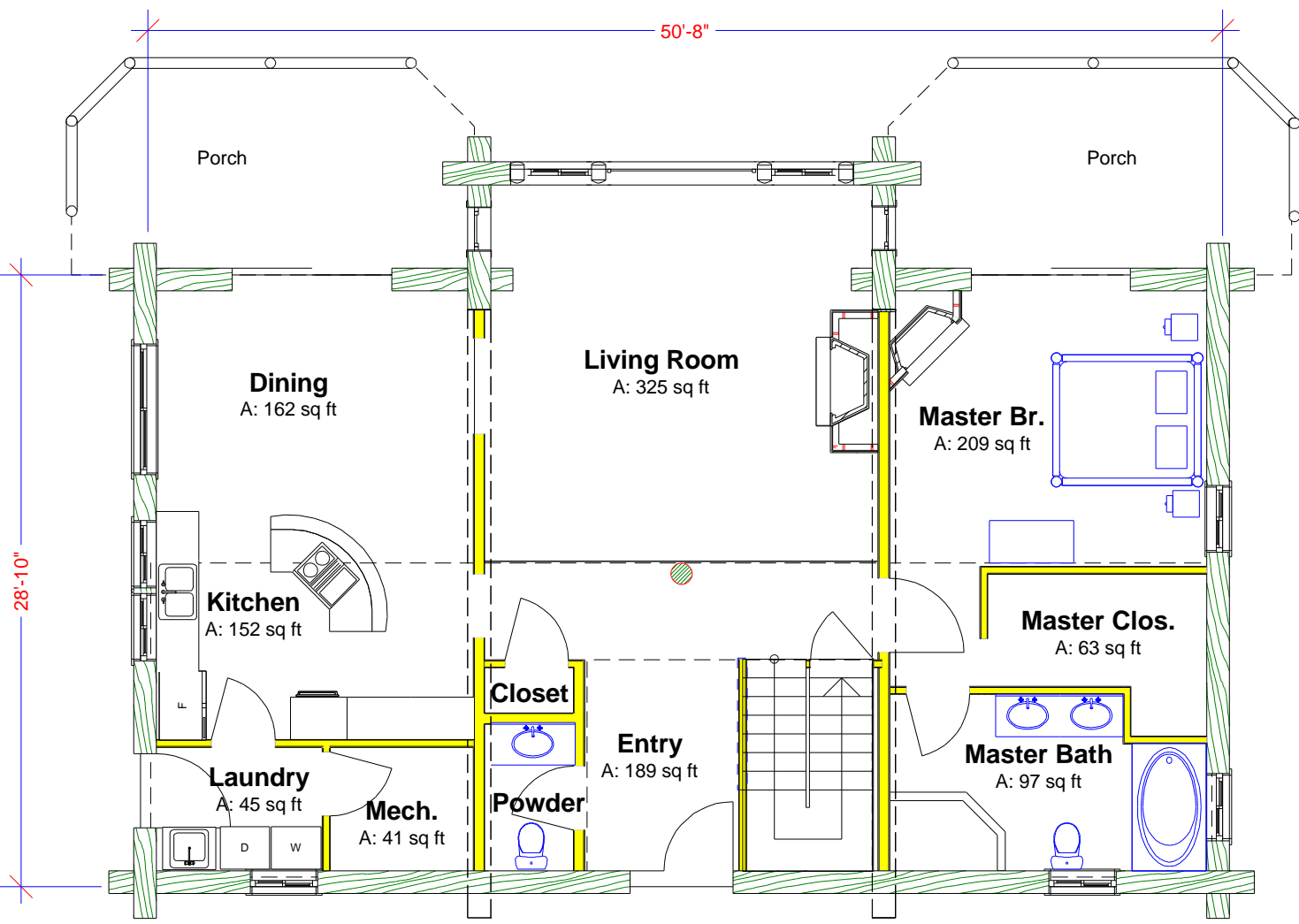


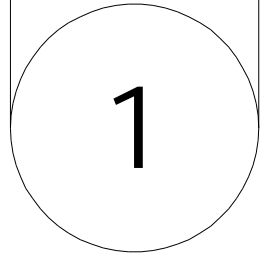


Copyright © 2003
All rights reserved.
FAX# 360-404-7083
PH# 360-966-8860
rick@logdesign.com



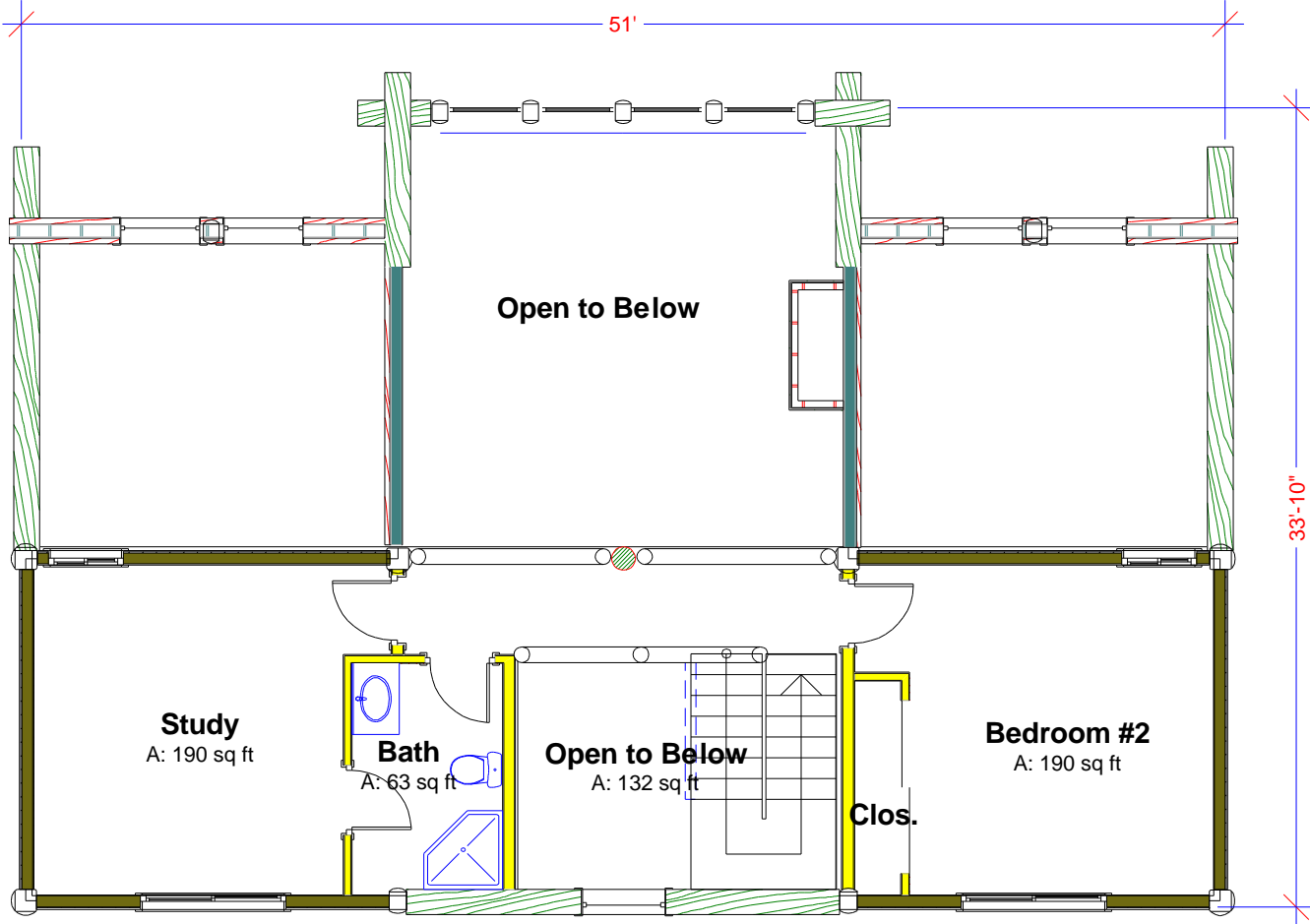
Three Peaks
Main Floor 1,570 sq ft
Total: 2,170 sq ft

Not for
Construction



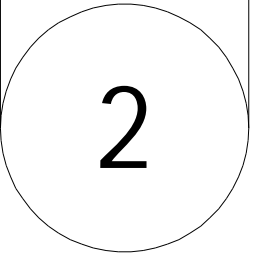


Copyright © 2003
All Rights reserved.
FAX# 360-404-7083
PH# 360-966-8860
rick@logdesign.com



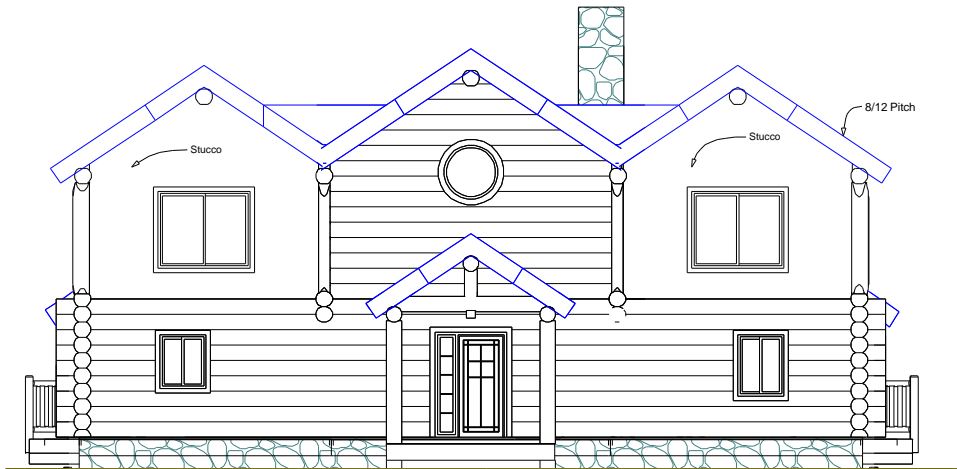
Three Peaks
Upper 600 sq ft
Total: 2,170 sq ft

Not for
Construction

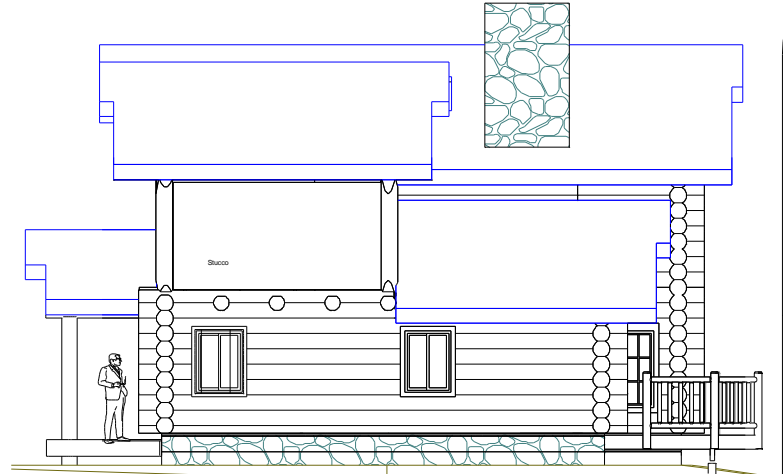




Copyright © 2003
All rights reserved.
FAX# 360-404-7083
PH# 360-966-8860
rick@logdesign.com



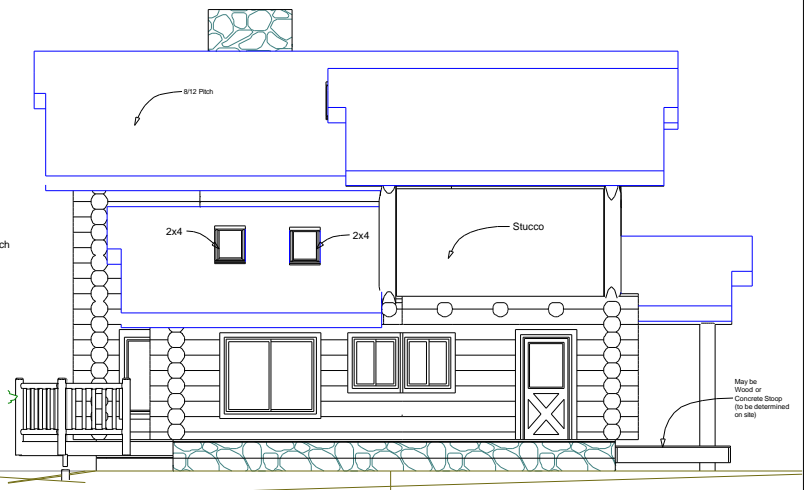
1 East ELEVATION
1/4" = 1'-0"



2 North ELEVATION
1/4" = 1'-0"



1 West ELEVATION
1/4" = 1'-0"



2 South ELEVATION
1/4" = 1'-0"

Three Peaks
Elevations
Total: 2,170 sq ft

Not for
Construction

